



**Canberra Institute  
of Technology**

RTO Code 0101 | CRICOS No. 00001K

# CIT Arrival Guide

---

Things to know before and  
after you arrive in Canberra

Have you checked CIT's step by step tips to start planning your arrival?

The following links can help with preparation for:

- » [Booking your flights](#)
- » [Applying for accommodation](#)
- » [Planning your finances](#)
- » [What to prepare and what to bring](#)

CIT's preferred Overseas Health Cover (OSHC) provider is Allianz Global Assistance

**Did you arranged your OSHC through CIT?** If so, you will need to create an account to access your policy information and order your OSHC card or e-membership. Visit [Create an account](#) through the Allianz Global Assistance website or download the [My OSHC Assistant App](#) onto your mobile device.



**[VIDEO: 'Allianz Global Assistance - Doctors on Demand'](#)**

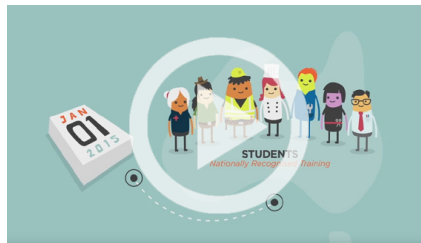
Discover how to use your OSHC e-membership or card when you visit the doctor.

You are required to have an Australian Government Unique Student Identifier (USI) number to enrol and Graduate from a CIT Program

This can be organised after you have received your visa to come to Australia.

To apply for your USI, you will need the following documentation:

- » A current Australian visa
- » A current passport (Please note that your name must be entered as it is shown in your passport fields)



**What is a USI?**

**[VIDEO: Unique Student Identifier \(USI\) - Student Video](#)**

**How to apply?** You can apply after you receive your student visa, it only takes 2 minutes! Go to [Unique Student Identifier USI](#)

Do you need to catch a bus from Sydney International Airport to Canberra?

[Murrays Coaches](#) and [Greyhound Australia](#) provide daily express services between Sydney International airport and the Jolimont Centre in Canberra City. Please refer to their websites for timetables, fares and booking information.

## How are you getting from the airport to your accommodation?

Transport Canberra's buses run regular services between the airport terminal and the city 7 days per week. Buses are also the main mode of public transport in Canberra.

- » You will need to catch either Bus Numbers 11 or 11A.
- » Payment can be made on the bus at your time of travel.
- » Adult Single fare (cash): \$5.00 | Daily ticket: \$9.60
- » Concession Single fare (cash): \$2.50 | Daily ticket: \$4.80
- » MyWay Card - Concession/Student Single fair: \$1.61

Please refer to the [Full timetable](#) to check what time a bus will be leaving the airport.

If you will be using the public transport system you can also purchase a concession [MyWay card](#) once you have received your CIT Student card.

**Please refer to [Transport Canberra website](#) for more information about bus service routes and timetable.**

### Taxis

Four Taxi companies operate from Canberra airport:

- » [ACT Cabs](#) | (02) 6280 0077
- » [Canberra Elite](#) | 13 22 27
- » [Cabxpress](#) | (02) 6260 6011
- » [Queanbeyan Taxi Co-op](#) | 13 22 11

The taxi rank is located on the ground floor of the terminal building close to baggage carousels. View map to see the location of the [Taxi Rank](#).

Some Taxi companies provide a fare calculator on their website or mobile device app so that can work out approximately how much your fare will cost to reach your destination.

## How can I get my CIT Student card?

1. Attend the CIT International Orientation.
2. Receive your enrolment information and your Pastoral Care Officer's contact details.
3. Attend your enrolment session with your Pastoral Care Officer and complete an enrolment form.
4. Submit your enrolment form to CIT Student Services.
5. Once submitted, you can apply for your CIT Student card through CIT Student Central on campus.

**You MUST provide one or more of the following original identification documents to have your identity validated:**

- » Driver's licence
- » International travel documentation (passport, diplomatic document or international driver's licence).

**OR** three of the following identification documents (originals or a certified true copy):

- » Birth Certificate
- » Citizenship Certificate
- » Marriage Certificate

*All costs are in AUD.*

What is the weather like in Canberra?

Canberra has four distinct seasons; it generally has low humidity with a dry heat in summer and cool winters. Frost can be common in Canberra in winter. It is important to be prepared for the season you will be arriving in. Check [Canberra's Forecast](#) to see what the weather will be like for the first week of your arrival.

Where can I buy groceries from in Canberra?

There are many large Supermarket stores, local suburban smaller grocery stores and also specialist grocery stores all over Canberra. You can locate a supermarket or grocery store near you on the [True Local website](#).

There is always a lot happening in Canberra

Link into [Visit Canberra](#) and [Events ACT](#) to keep up to date with what events are coming up.

What is a 'default date'?

Your Letter of Offer (LOO) and Confirmation of Enrolment/s (COE/s) advise a default date for each program. The default date is to identify the final date for enrolment and entry to your chosen course.

If you are experiencing visa delays, the default date on these documents can advise the Australian Department of Home Affairs, in-country Embassy or High Commission the latest start date that CIT will accept you into the program.

What happens if I do not receive my visa by the default date?

If you are not able to arrive to commence your classes by the default date due to visa delays, you will be required to provide written advice to [isadmissions@cit.edu.au](mailto:isadmissions@cit.edu.au) to defer your offer to the next available intake.

## Do you have any questions?

CIT International is here to answer your questions and provide advice!

**Phone:** +61 2 6207 4662

**Fax:** +61 2 6207 4666

**Email:** [international@cit.edu.au](mailto:international@cit.edu.au)

### Office location

CIT Bruce | C Block | Room C102 | ACT | 2617

Free parking is available.

### Postal Address

PO Box 226, Jamison ACT 2614

### Office opening hours

Monday to Friday: 9:00am – 5:00pm

### Finance Office opening hours

Monday to Friday: 9:00am – 4:00pm